

The Finished Ends

Step 1

Blot the hair with a towel to remove as much water as possible.



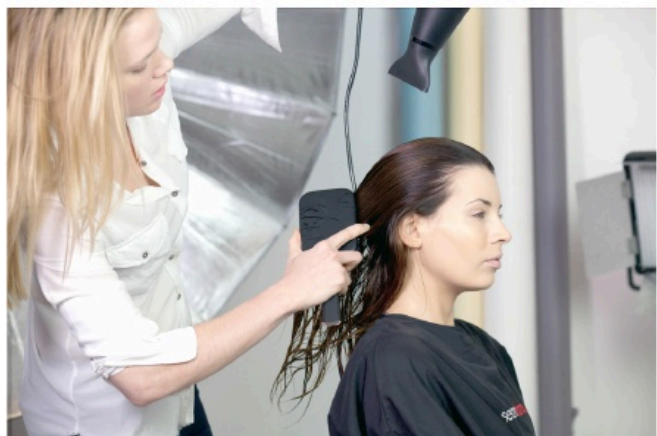
Step 2

Apply a small amount of base product to mid lengths and ends.



Step 3

Smooth dry with a paddle brush or large bristle brush (not a round brush). Dry to about 70% dry.



The Finished Ends

Step 4

Add a hold product to the mid lengths and ends. Section the hair off and apply to each section.



Step 5

Smooth the hair with a round brush in 2 inch sections. Keep tension on the roots and use the round brush to roll in the ends for movement.



Step 6

Before the section cools, roll the hair then secure with a metal clip.



The Finished Ends

Step 7

Alternatively, for a stronger effect, roll the ends of the hair around a hot roller and secure.



Step 8

Work up the head in 2 inch x 2 inch sections.



Step 9

Once all sections have been curled, allow a few minutes for the hair to cool down.



The Finished Ends

Step 10

Remove all metal clips and start to dress the ends. Tip: When securing your sections, use a hair pin rather than a clip which can leave a dent in the hair.



Step 11

Use a medium dry hold hairspray and a soft brush to dress the hair.

